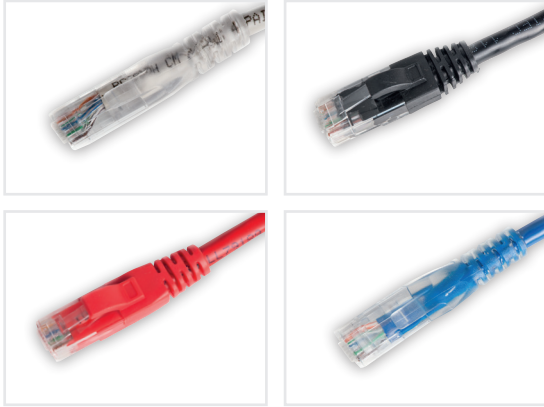


Cat 6 Unshielded Patch Cords

Techlogiks Cat 6 unshielded patch cords, made of high performance UTP components available in broad range of lengths and easy to trace colours. They are designed to meet or exceed all Cat6 specifications. It has 24 AWG conductor securely mated with a patented RJ45 plug design to deliver superior electrical performance with excellent repeatability. The unique anti-snagging feature simplifies removal and replacement of patch cords.



Features:-

- Unique design of Cat6 RJ45 modular plugs and line pair decrease cross talk and increase allowance.
- Excellent attenuation and crosstalk continuity
- Meet or exceed the requirement of Cat6 UTP system
- Lead-free & RoHS2 compliant.
- Level A reliability requirements of IEC 60603-7-2 and IEC 60603-7-4 for RJ45.
- Compatible for T568A and T568B wiring schemes.

| Electrical Characteristics | |
|----------------------------|------------------|
| Current Rating | 1.5 Amp |
| Insulation Resistance | 500 Megohm min. |
| Contact Resistance | 20 Milli-ohm max |
| Dielectric Strength | 1000 VAC (RMS) |
| Voltage | 30 VAC max. |

| Environmental Characteristics | |
|-------------------------------|--------------|
| Temperature | -10°C ~ 60°C |
| Humidity | 10% ~ 90%RH |

| Physical Characteristics | |
|--------------------------|--|
| Conductor | 24 AWG bare copper |
| Insulation material | PE |
| Structure | 4 twisted pair, Cross filler |
| Cable Jacket | PVC or LSZH |
| Plug Housing | Polycarbonate |
| Contact Blades | Phosphor bronze with 50μ" gold plating |

| Mechanical Characteristics | |
|----------------------------|---------------|
| Durability | 1000 plugging |
| Nominal outer diameter | 5.6mm |
| Minimum bending radius | 22.4m |

ORDERING INFORMATION

| PART NUMBER | DESCRIPTION |
|---|--|
| TL-PCC6-UH1GY | Cat 6 Unshielded Patch Cord. 1 Meter, PVC |
| TL-PCC6-UHLZ1GY | Cat 6 Unshielded Patch Cord. 1 Meter, LSZH |
| TL-PCC6-UHXXYY* | Cat 6 Unshielded Patch Cord. PVC |
| TL-PCC6-UHLZXXYY* | Cat 6 Unshielded Patch Cord. LSZH |
| * XX-01, 02, 03 Meters etc.... YY-GY, RD, BL, GR, WH, YL. | |